

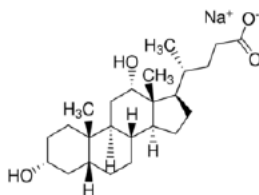
CAS-No.: 302-95-4 MSDS

## MATERIAL SAFETY DATA SHEET (MSDS)

### SECTION 1: Identification of the substance/mixture and of the company/undertaking

#### 1.1. Product identifier

Product form : Substance  
:  
CAS-No. : 302-95-4  
Product code : 05848  
Chemical structure :



#### 1.2. Relevant identified uses of the substance or mixture and uses advised against

##### 1.2.1. Relevant identified uses

Industrial/Professional use spec : Industrial  
For professional use only

##### 1.2.2. Uses advised against

No additional information available

#### 1.3. Details of the supplier of the safety data sheet

Labogens Fine Chem Industries  
1st Floor , Above Bank of India, Guru Vihar , Rahon Road,  
Ludhiana Pb. (141007)  
+91 9316777775, +91 7707855700  
[sales@labogens.com](mailto:sales@labogens.com) - [www.Labogens.com](http://www.Labogens.com)

#### 1.4. Emergency telephone number

Emergency number : +91 7707855700 (9:00am - 6:00 pm)

### SECTION 2: Hazards identification

#### 2.1. Classification of the substance or mixture

##### Classification according to Regulation (EC) No. 1272/2008 [CLP]

Acute toxicity (oral), H302  
Category 4  
Specific target organ H335  
toxicity — Single  
exposure, Category 3,  
Respiratory tract irritation

Full text of H statements : see section 16

# SODIUM DEOXYCHOLATE Extra Pure

## Safety Data Sheet

### Classification according to Directive 67/548/EEC [DSD] or 1999/45/EC [DPD]

Xn; R22

Xi; R37

Full text of R-phrases: see section 16

### Adverse physicochemical, human health and environmental effects

No additional information available

## 2.2. Label elements

### Labelling according to Regulation (EC) No. 1272/2008 [CLP]

Hazard pictograms (CLP) :



GHS07

Signal word (CLP) :

Warning

Hazard statements (CLP) :

H302 - Harmful if swallowed.  
H335 - May cause respiratory irritation.

Precautionary statements (CLP) :

P261 - Avoid breathing dust/fume/gas/mist/vapours/spray.

## 2.3. Other hazards

No additional information available

## SECTION 3: Composition/information on ingredients

### 3.1. Substances

Name : SODIUM DEOXYCHOLATE Extra Pure

CAS-No. : 302-95-4

Full text of R- and H-statements: see section 16

### 3.2. Mixtures

Not applicable

## SECTION 4: First aid measures

### 4.1. Description of first aid measures

First-aid measures after inhalation : Remove person to fresh air and keep comfortable for breathing. Call a POISON CENTER/doctor if you feel unwell.

First-aid measures after skin contact : Gently wash with plenty of soap and water. If skin irritation occurs: Get medical advice/attention.

First-aid measures after eye contact : Remove contact lenses, if present and easy to do. Continue rinsing. Rinse cautiously with water for several minutes. If eye irritation persists: Get medical advice/attention.

# SODIUM DEOXYCHOLATE Extra Pure

## Safety Data Sheet

First-aid measures after ingestion : Rinse mouth. Call a POISON CENTER/doctor if you feel unwell.

### 4.2. Most important symptoms and effects, both acute and delayed

Symptoms/effects after inhalation : May cause respiratory irritation.

Symptoms/effects after ingestion : Harmful if swallowed.

### 4.3. Indication of any immediate medical attention and special treatment needed

Treat symptomatically.

## SECTION 5: Firefighting measures

### 5.1. Extinguishing media

Suitable extinguishing media : dry chemical powder, alcohol-resistant foam, carbon dioxide (CO<sub>2</sub>).

Unsuitable extinguishing media : Do not use extinguishing media containing water.

### 5.2. Special hazards arising from the substance or mixture

No additional information available

### 5.3. Advice for firefighters

Protection during firefighting : Do not attempt to take action without suitable protective equipment.

## SECTION 6: Accidental release measures

### 6.1. Personal precautions, protective equipment and emergency procedures

#### 6.1.1. For non-emergency personnel

Emergency procedures : Avoid contact with skin, eyes and clothing.

#### 6.1.2. For emergency responders

Protective equipment : Use personal protective equipment as required.

Emergency procedures : Stop release.

### 6.2. Environmental precautions

Avoid release to the environment.

### 6.3. Methods and material for containment and cleaning up

Methods for cleaning up : Clean up immediately by sweeping or vacuum. Clean contaminated surfaces with an excess of water.

### 6.4. Reference to other sections

No additional information available

## SECTION 7: Handling and storage

### 7.1. Precautions for safe handling

Precautions for safe handling : Avoid breathing dust/fume/gas/mist/vapours/spray. Use only outdoors or in a well-ventilated area.

Hygiene measures : Do not eat, drink or smoke when using this product. Wash hands, forearms and face thoroughly after handling.

### 7.2. Conditions for safe storage, including any incompatibilities

Storage conditions : Keep container tightly closed. Store in a dry place.

### 7.3. Specific end use(s)

No additional information available

## SECTION 8: Exposure controls/personal protection

### 8.1. Control parameters

No additional information available

# SODIUM DEOXYCHOLATE Extra Pure

## Safety Data Sheet

---

### 8.2. Exposure controls

Hand protection	: Protective gloves
Eye protection	: Chemical goggles or safety glasses
Skin and body protection	: Wear suitable protective clothing
Respiratory protection	: Wear respiratory protection.

## SECTION 9: Physical and chemical properties

### 9.1. Information on basic physical and chemical properties

Physical state	: Solid
Molecular mass	: 414.55 g/mol
Colour	: White powder.
Odour	: odourless.
Odour threshold	: No data available
pH	: 7 - 10
Relative evaporation rate (butylacetate=1)	: No data available
Melting point	: 357 - 3650
Freezing point	: No data available
Boiling point	: No data available
Flash point	: No data available
Auto-ignition temperature	: No data available
Decomposition temperature	: No data available
Flammability (solid, gas)	: No data available
Vapour pressure	: No data available
Relative vapour density at 20 °C	: No data available
Relative density	: No data available
Solubility	: Water: Soluble in water
Log Pow	: No data available
Viscosity, kinematic	: No data available
Viscosity, dynamic	: No data available
Explosive properties	: No data available
Oxidising properties	: No data available
Explosive limits	: No data available

### 9.2. Other information

No additional information available

# SODIUM DEOXYCHOLATE Extra Pure

## Safety Data Sheet

### SECTION 10: Stability and reactivity

#### 10.1. Reactivity

No additional information available

#### 10.2. Chemical stability

Stable under normal conditions.

#### 10.3. Possibility of hazardous reactions

No additional information available

#### 10.4. Conditions to avoid

Air contact. Direct sunlight. Moisture.

#### 10.5. Incompatible materials

No additional information available

#### 10.6. Hazardous decomposition products

No additional information available

### SECTION 11: Toxicological information

#### 11.1. Information on toxicological effects

Acute toxicity	: Oral: Harmful if swallowed.
Skin corrosion/irritation	: Not classified pH: 7 - 10
Serious eye damage/irritation	: Not classified pH: 7 - 10
Respiratory or skin sensitisation	: Not classified
Germ cell mutagenicity	: Not classified
Carcinogenicity	: Not classified
Reproductive toxicity	: Not classified
STOT-single exposure	: May cause respiratory irritation.
STOT-repeated exposure	: Not classified
Aspiration hazard	: Not classified
Potential adverse human health effects and symptoms	: Harmful if swallowed.

### SECTION 12: Ecological information

#### 12.1. Toxicity

No additional information available

# SODIUM DEOXYCHOLATE Extra Pure

## Safety Data Sheet

### 12.2. Persistence and degradability

No additional information available

### 12.3. Bioaccumulative potential

No additional information available

### 12.4. Mobility in soil

No additional information available

### 12.5. Results of PBT and vPvB assessment

No additional information available

### 12.6. Other adverse effects

No additional information available

## SECTION 13: Disposal considerations

### 13.1. Waste treatment methods

Product/Packaging disposal recommendations : Dispose of contents/container to hazardous or special waste collection point, in accordance with local, regional, national and/or international regulation.

## SECTION 14: Transport information

In accordance with ADR / RID / IMDG / IATA / ADN

### 14.1. UN number

UN-No. (ADR)	: Not applicable
UN-No. (IMDG)	: Not applicable
UN-No. (IATA)	: Not applicable
UN-No. (ADN)	: Not applicable
UN-No. (RID)	: Not applicable

### 14.2. UN proper shipping name

Proper Shipping Name (ADR)	: Not applicable
Proper Shipping Name (IMDG)	: Not applicable
Proper Shipping Name (IATA)	: Not applicable
Proper Shipping Name (ADN)	: Not applicable
Proper Shipping Name (RID)	: Not applicable

### 14.3. Transport hazard class(es)

#### ADR

Transport hazard class(es) (ADR) : Not applicable

#### IMDG

Transport hazard class(es) (IMDG) : Not applicable

#### IATA

Transport hazard class(es) (IATA) : Not applicable

#### ADN

Transport hazard class(es) (ADN) : Not applicable

# SODIUM DEOXYCHOLATE Extra Pure

## Safety Data Sheet

### RID

Transport hazard class(es) (RID) : Not applicable

### 14.4. Packing group

Packing group (ADR) : Not applicable  
Packing group (IMDG) : Not applicable  
Packing group (IATA) : Not applicable  
Packing group (ADN) : Not applicable  
Packing group (RID) : Not applicable

### 14.5. Environmental hazards

Dangerous for the environment : No  
Marine pollutant : No  
Other information : No supplementary information available

### 14.6. Special precautions for user

#### - Overland transport

No data available

#### - Transport by sea

No data available

#### - Air transport

No data available

#### - Inland waterway transport

No data available

#### - Rail transport

No data available

### 14.7. Transport in bulk according to Annex II of MARPOL 73/78 and the IBC Code

Not applicable

## SECTION 15: Regulatory information

### 15.1. Safety, health and environmental regulations/legislation specific for the substance or mixture

#### 15.1.1. EU-Regulations

No REACH Annex XVII restrictions

SODIUM DEOXYCHOLATE Extra Pure is not on the REACH Candidate List

SODIUM DEOXYCHOLATE Extra Pure is not on the REACH Annex XIV List

#### 15.1.2. National regulations

##### Germany

12th Ordinance Implementing the Federal Immission Control Act - 12.BImSchV : Is not subject of the 12. BImSchV (Hazardous Incident Ordinance)

##### Netherlands

# SODIUM DEOXYCHOLATE Extra Pure

## Safety Data Sheet

SZW-lijst van kankerverwekkende stoffen	: The substance is not listed
SZW-lijst van mutagene stoffen	: The substance is not listed
NIET-limitatieve lijst van voor de voortplanting giftige stoffen – Borstvoeding	: The substance is not listed
NIET-limitatieve lijst van voor de voortplanting giftige stoffen – Vruchtbaarheid	: The substance is not listed
NIET-limitatieve lijst van voor de voortplanting giftige stoffen – Ontwikkeling	: The substance is not listed

### Denmark

Recommendations Danish Regulation : Young people below the age of 18 years are not allowed to use the product

### 15.2. Chemical safety assessment

No additional information available

### SECTION 16: Other information

Full text of R-, H- and EUH-statements:

Acute Tox. 4 (Oral)	Acute toxicity (oral), Category 4
STOT SE 3	Specific target organ toxicity — Single exposure, Category 3, Respiratory tract irritation
H302	Harmful if swallowed.
H335	May cause respiratory irritation.
R22	Harmful if swallowed
R37	Irritating to respiratory system
Xi	Irritant
Xn	Harmful

*This information is based on our current knowledge and is intended to describe the product for the purposes of health, safety and environmental requirements only. It should not therefore be construed as guaranteeing any specific property of the product*