

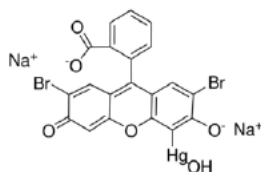
## CAS No: 129-16-8 MSDS

### MATERIAL SAFETY DATA SHEET (MSDS)

#### SECTION 1: Identification of the substance/mixture and of the company/undertaking

##### 1.1. Product identifier

Product form : Substance  
 :  
 CAS No : 129-16-8  
 Product code : 04587  
 Chemical structure :



Synonyms : Merbromin / 2',7'-Dibromo-5'-(hydroxymercurio)fluorescein / Mercury dibromofluorescein disodium salt

##### 1.2. Relevant identified uses of the substance or mixture and uses advised against

###### 1.2.1. Relevant identified uses

Use of the substance/mixture : Laboratory chemicals, Manufacture of substances

###### 1.2.2. Uses advised against

No additional information available

##### 1.3. Details of the supplier of the safety data sheet

Labogens Fine Chem Industries  
 1st Floor , Above Bank of India, Guru Vihar , Rahon Road,  
 Ludhiana Pb. (141007)  
 +91 9316777775, +91 7707855700  
[sales@labogens.com](mailto:sales@labogens.com) - [www.Labogens.com](http://www.Labogens.com)

##### 1.4. Emergency telephone number

Emergency number : +91 7707855700 (9:00am - 6:00 pm)

#### SECTION 2: Hazards identification

##### 2.1. Classification of the substance or mixture

###### Classification according to Regulation (EC) No. 1272/2008 [CLP]

Acute toxicity (dermal), Category 1	H310
Acute toxicity (inhal.), Category 2	H330
Acute toxicity (oral), Category 1	H300
Hazardous to the aquatic environment — Acute Hazard, Category 1	H400
Hazardous to the aquatic environment — Chronic	H410

# MERCUROCHROME Extra Pure

## Safety Data Sheet

Hazard, Category 1

Full text of classification categories and H statements : see section 16

### Classification according to Directive 67/548/EEC or 1999/45/EC

T+; R26/27/28

N; R50/53

R33

Full text of R-phrases: see section 16

### Adverse physicochemical, human health and environmental effects

No additional information available

## 2.2. Label elements

### Labelling according to Regulation (EC) No. 1272/2008 [CLP]

Hazard pictograms (CLP) :



GHS06

GHS09

GHS08

Signal word (CLP) : Danger

Hazard statements (CLP) : H300+H310+H330 - Fatal if swallowed, in contact with skin or if inhaled  
H410 - Very toxic to aquatic life with long lasting effects

Precautionary statements (CLP) : P260 - Do not breathe dust/fume/gas/mist/vapours/spray  
P264 - Wash ... thoroughly after handling  
P273 - Avoid release to the environment  
P280 - Wear protective gloves/protective clothing/eye protection/face protection  
P284 - [In case of inadequate ventilation] wear respiratory protection  
P301+P310 - IF SWALLOWED: immediately call a POISON CENTER or doctor/physician

## 2.3. Other hazards

No additional information available

## SECTION 3: Composition/information on ingredients

### 3.1. Substance

Name : MERCUROCHROME Extra Pure

CAS No : 129-16-8

Full text of R- and H-phrases: see section 16

# MERCUROCHROME Extra Pure

## Safety Data Sheet

### 3.2. Mixture

Not applicable

## SECTION 4: First aid measures

### 4.1. Description of first aid measures

First-aid measures after inhalation	: Remove person to fresh air and keep comfortable for breathing. Give oxygen or artificial respiration if necessary. If you feel unwell, seek medical advice.
First-aid measures after skin contact	: Immediately call a POISON CENTER or doctor/physician. Specific measures (see ... on this label). Gently wash with plenty of soap and water. Remove/Take off immediately all contaminated clothing. Wash contaminated clothing before reuse.
First-aid measures after eye contact	: Remove contact lenses, if present and easy to do. Continue rinsing. Rinse cautiously with water for several minutes. If eye irritation persists: Get medical advice/attention.
First-aid measures after ingestion	: Rinse mouth. Immediately call a POISON CENTER or doctor/physician. Specific treatment (see ... on this label).

### 4.2. Most important symptoms and effects, both acute and delayed

Symptoms/injuries	: There are potential chronic health effects to consider.
Symptoms/injuries after skin contact	: Fatal in contact with skin.
Symptoms/injuries after ingestion	: Fatal if swallowed.

### 4.3. Indication of any immediate medical attention and special treatment needed

Treat symptomatically.

## SECTION 5: Firefighting measures

### 5.1. Extinguishing media

Suitable extinguishing media	: dry chemical powder, alcohol-resistant foam, carbon dioxide (CO <sub>2</sub> ).
Unsuitable extinguishing media	: Do not use a heavy water stream.

### 5.2. Special hazards arising from the substance or mixture

No additional information available

### 5.3. Advice for firefighters

Protection during firefighting	: Do not attempt to take action without suitable protective equipment.
--------------------------------	--

## SECTION 6: Accidental release measures

### 6.1. Personal precautions, protective equipment and emergency procedures

#### 6.1.1. For non-emergency personnel

Emergency procedures	: Evacuate unnecessary personnel.
----------------------	-----------------------------------

#### 6.1.2. For emergency responders

Protective equipment	: Use personal protective equipment as required.
Emergency procedures	: Ventilate area.

### 6.2. Environmental precautions

Avoid release to the environment.

### 6.3. Methods and material for containment and cleaning up

Methods for cleaning up	: Clean up immediately by sweeping or vacuum.
-------------------------	---

### 6.4. Reference to other sections

No additional information available

## SECTION 7: Handling and storage

### 7.1. Precautions for safe handling

Precautions for safe handling	: Do not get in eyes, on skin, or on clothing.
-------------------------------	--

# MERCUROCHROME Extra Pure

## Safety Data Sheet

Hygiene measures : Wash ... thoroughly after handling. Do not eat, drink or smoke when using this product.

### 7.2. Conditions for safe storage, including any incompatibilities

Storage conditions : Store in original container. Keep container tightly closed. Store in a dry place. Protect from moisture.

### 7.3. Specific end use(s)

No additional information available

## SECTION 8: Exposure controls/personal protection

### 8.1. Control parameters

No additional information available

### 8.2. Exposure controls

Hand protection : protective gloves  
Eye protection : Chemical goggles or safety glasses  
Skin and body protection : Wear suitable protective clothing  
Respiratory protection : Wear respiratory protection

## SECTION 9: Physical and chemical properties

### 9.1. Information on basic physical and chemical properties

Physical state : Solid  
Colour : Dark reddish brown.  
Odour : odourless.  
Odour threshold : No data available  
pH : 8.5 - 9  
Relative evaporation rate (butylacetate=1) : No data available  
Melting point : > 300 °C  
Freezing point : No data available  
Boiling point : No data available  
Flash point : No data available  
Auto-ignition temperature : No data available  
Decomposition temperature : No data available  
Flammability (solid, gas) : No data available  
Vapour pressure : No data available  
Relative vapour density at 20 °C : No data available  
Relative density : No data available

# MERCUROCHROME Extra Pure

## Safety Data Sheet

Solubility	: No data available
Log Pow	: No data available
Viscosity, kinematic	: No data available
Viscosity, dynamic	: No data available
Explosive properties	: No data available
Oxidising properties	: No data available
Explosive limits	: No data available

### 9.2. Other information

No additional information available

## SECTION 10: Stability and reactivity

### 10.1. Reactivity

No additional information available

### 10.2. Chemical stability

Stable under normal conditions.

### 10.3. Possibility of hazardous reactions

No additional information available

### 10.4. Conditions to avoid

Direct sunlight. Air contact. Moisture.

### 10.5. Incompatible materials

No additional information available

### 10.6. Hazardous decomposition products

No additional information available

## SECTION 11: Toxicological information

### 11.1. Information on toxicological effects

Acute toxicity	: Dermal: Fatal in contact with skin. Inhalation: Fatal if inhaled. Oral: Fatal if swallowed.
Skin corrosion/irritation	: Not classified pH: 8.5 - 9
Serious eye damage/irritation	: Not classified pH: 8.5 - 9
Respiratory or skin sensitisation	: Not classified
Germ cell mutagenicity	: Not classified
Carcinogenicity	: Not classified
Reproductive toxicity	: Not classified
Specific target organ toxicity (single exposure)	: Not classified

# MERCUROCHROME Extra Pure

## Safety Data Sheet

Specific target organ toxicity (repeated exposure) : Not classified  
Additional information : There are potential chronic health effects to consider

Aspiration hazard : Not classified

Potential adverse human health effects and symptoms : Fatal if swallowed. Fatal in contact with skin.

### SECTION 12: Ecological information

#### 12.1. Toxicity

Ecology - water : Very toxic to aquatic life with long lasting effects.

#### 12.2. Persistence and degradability

##### MERCUROCHROME Extra Pure (129-16-8)

Persistence and degradability	May cause long-term adverse effects in the environment.
-------------------------------	---

#### 12.3. Bioaccumulative potential

No additional information available

#### 12.4. Mobility in soil

No additional information available

#### 12.5. Results of PBT and vPvB assessment

No additional information available

#### 12.6. Other adverse effects

No additional information available

### SECTION 13: Disposal considerations

#### 13.1. Waste treatment methods

Product/Packaging disposal recommendations : Dispose of contents/container to ...  
Ecology - waste materials : Hazardous waste due to toxicity.

### SECTION 14: Transport information

In accordance with ADR / RID / IMDG / IATA / ADN

#### 14.1. UN number

UN-No. (ADR) : 2025  
UN-No. (IMDG) : 2025  
UN-No.(IATA) : 2025  
UN-No.(ADN) : 2025  
UN-No. (RID) : 2025

# MERCUROCHROME Extra Pure

## Safety Data Sheet

### 14.2. UN proper shipping name

Proper Shipping Name (ADR)	: MERCURY COMPOUND, SOLID, N.O.S.
Proper Shipping Name (IMDG)	: MERCURY COMPOUND, SOLID, N.O.S.
Proper Shipping Name (IATA)	: MERCURY COMPOUND, SOLID, N.O.S.
Proper Shipping Name (ADN)	: MERCURY COMPOUND, SOLID, N.O.S.
Proper Shipping Name (RID)	: MERCURY COMPOUND, SOLID, N.O.S.
Transport document description (ADR)	: UN 2025 MERCURY COMPOUND, SOLID, N.O.S., 6.1, II, (D/E), ENVIRONMENTALLY HAZARDOUS
Transport document description (IMDG)	: UN 2025 MERCURY COMPOUND, SOLID, N.O.S., 6.1, II, MARINE POLLUTANT/ENVIRONMENTALLY HAZARDOUS
Transport document description (IATA)	: UN 2025 MERCURY COMPOUND, SOLID, N.O.S., 6.1, II, ENVIRONMENTALLY HAZARDOUS
Transport document description (ADN)	: UN 2025 MERCURY COMPOUND, SOLID, N.O.S., 6.1, II, ENVIRONMENTALLY HAZARDOUS
Transport document description (RID)	: UN 2025 MERCURY COMPOUND, SOLID, N.O.S., 6.1, II, ENVIRONMENTALLY HAZARDOUS

### 14.3. Transport hazard class(es)

#### ADR

Transport hazard class(es) (ADR)	: 6.1
Danger labels (ADR)	: 6.1



#### IMDG

Transport hazard class(es) (IMDG)	: 6.1
Danger labels (IMDG)	: 6.1



#### IATA

Transport hazard class(es) (IATA)	: 6.1
Hazard labels (IATA)	: 6.1



#### ADN

Transport hazard class(es) (ADN)	: 6.1
Danger labels (ADN)	: 6.1



# MERCUROCHROME Extra Pure

## Safety Data Sheet

### RID

Transport hazard class(es) (RID) : 6.1

Danger labels (RID) : 6.1



### 14.4. Packing group

Packing group (ADR) : II

Packing group (IMDG) : II

Packing group (IATA) : II

Packing group (ADN) : II

Packing group (RID) : II

### 14.5. Environmental hazards

Dangerous for the environment : Yes

Marine pollutant : Yes

Other information : No supplementary information available

### 14.6. Special precautions for user

#### - Overland transport

Classification code (ADR) : T5

Special provision (ADR) : 43, 274, 529, 66

Limited quantities (ADR) : 500g

Excepted quantities (ADR) : E4

Packing instructions (ADR) : P002, IBC08

Special packing provisions (ADR) : B4

Mixed packing provisions (ADR) : MP10

Portable tank and bulk container instructions (ADR) : T3

Portable tank and bulk container special provisions (ADR) : TP33

Tank code (ADR) : SGAH

Tank special provisions (ADR) : TU15, TE19

Vehicle for tank carriage : AT

Transport category (ADR) : 2

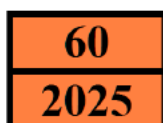
Special provisions for carriage - Packages (ADR) : V11

Special provisions for carriage - Loading, unloading and handling (ADR) : CV13, CV28

Special provisions for carriage - Operation (ADR) : S9, S19

Hazard identification number (Kemler No.) : 60

Orange plates :



Tunnel restriction code (ADR) : D/E

EAC code : 2X



# MERCUROCHROME Extra Pure

## Safety Data Sheet

---

### - Transport by sea

Special provision (IMDG)	: 43, 66, 274
Limited quantities (IMDG)	: 500 g
Excepted quantities (IMDG)	: E4
Packing instructions (IMDG)	: P002
IBC packing instructions (IMDG)	: IBC08
IBC special provisions (IMDG)	: B2, B4
Tank instructions (IMDG)	: T3
Tank special provisions (IMDG)	: TP33
EmS-No. (Fire)	: F-A
EmS-No. (Spillage)	: S-A
Stowage category (IMDG)	: A
MFAG-No	: 151

### - Air transport

PCA Excepted quantities (IATA)	: E4
PCA Limited quantities (IATA)	: Y644
PCA limited quantity max net quantity (IATA)	: 1kg
PCA packing instructions (IATA)	: 669
PCA max net quantity (IATA)	: 25kg
CAO packing instructions (IATA)	: 676
CAO max net quantity (IATA)	: 100kg
Special provision (IATA)	: A3, A4, A6, A18
ERG code (IATA)	: 6L

### - Inland waterway transport

Classification code (ADN)	: T5
Special provisions (ADN)	: 43, 274, 529, 585, 82
Limited quantities (ADN)	: 500 g
Excepted quantities (ADN)	: E4
Equipment required (ADN)	: PP, EP
Number of blue cones/lights (ADN)	: 2

### - Rail transport

Classification code (RID)	: T5
Special provision (RID)	: 43, 66, 274, 529
Limited quantities (RID)	: 500g
Excepted quantities (RID)	: E4
Packing instructions (RID)	: P002, IBC08
Special packing provisions (RID)	: B4
Mixed packing provisions (RID)	: MP10
Portable tank and bulk container instructions (RID)	: T3
Portable tank and bulk container special provisions (RID)	: TP33
Tank codes for RID tanks (RID)	: SGAH
Special provisions for RID tanks (RID)	: TU15
Transport category (RID)	: 2
Special provisions for carriage – Packages (RID)	: W11
Special provisions for carriage – Loading and unloading (RID)	: CW13, CW28, CW31
Colis express (express parcels) (RID)	: CE9
Hazard identification number (RID)	: 60

# MERCUROCHROME Extra Pure

## Safety Data Sheet

### 14.7. Transport in bulk according to Annex II of MARPOL 73/78 and the IBC Code

Not applicable

## SECTION 15: Regulatory information

### 15.1. Safety, health and environmental regulations/legislation specific for the substance or mixture

#### 15.1.1. EU-Regulations

No REACH Annex XVII restrictions

MERCUROCHROME Extra Pure is not on the REACH Candidate List

MERCUROCHROME Extra Pure is not on the REACH Annex XIV List

#### 15.1.2. National regulations

##### Germany

12th Ordinance Implementing the Federal Immission Control Act - 12.BImSchV : Is not subject of the 12. BImSchV (Hazardous Incident Ordinance)

##### Denmark

Recommendations Danish Regulation : Young people below the age of 18 years are not allowed to use the product  
Pregnant/breastfeeding women working with the product must not be in direct contact with the product

### 15.2. Chemical safety assessment

No additional information available

## SECTION 16: Other information

Full text of R-, H- and EUH-phrases:

Acute Tox. 1 (Dermal)	Acute toxicity (dermal), Category 1
Acute Tox. 1 (Oral)	Acute toxicity (oral), Category 1
Acute Tox. 2 (Inhalation)	Acute toxicity (inhal.), Category 2
Aquatic Acute 1	Hazardous to the aquatic environment — Acute Hazard, Category 1
Aquatic Chronic 1	Hazardous to the aquatic environment — Chronic Hazard, Category 1
H300	Fatal if swallowed
H310	Fatal in contact with skin
H330	Fatal if inhaled
H400	Very toxic to aquatic life
H410	Very toxic to aquatic life with long lasting effects
R26/27/28	Very toxic by inhalation, in contact with skin and if swallowed
R33	Danger of cumulative effects

# MERCUROCHROME Extra Pure

## Safety Data Sheet

R50/53	Very toxic to aquatic organisms, may cause long-term adverse effects in the aquatic environment
N	Dangerous for the environment
T+	Very toxic

*This information is based on our current knowledge and is intended to describe the product for the purposes of health, safety and environmental requirements only. It should not therefore be construed as guaranteeing any specific property of the product*